

# LIBRARY *by the* NUMBERS

## 2,606,133

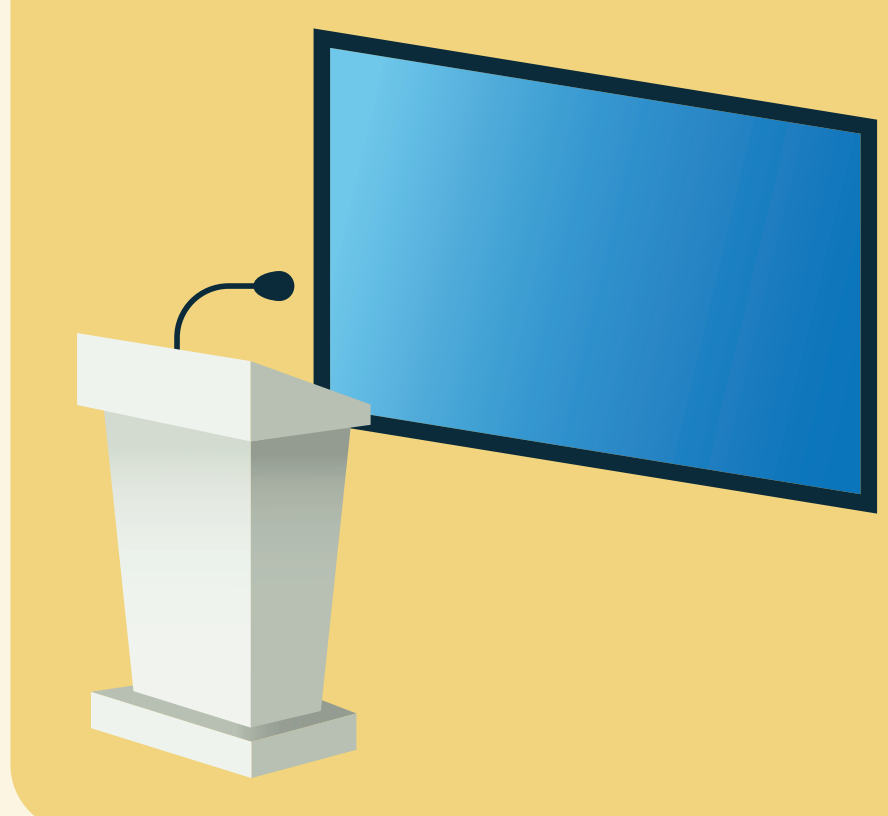
Library Visitors



## 2025

July 1, 2024 to June 30, 2025

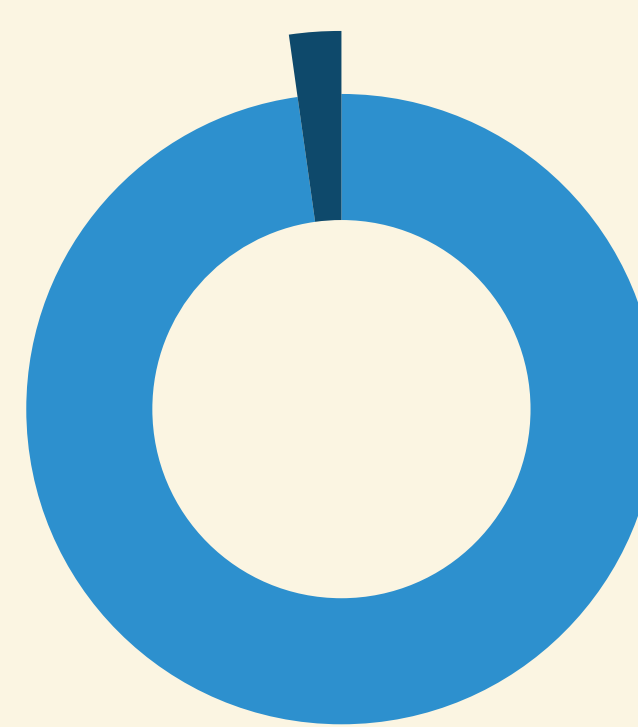
### Programs



## 26,061

Programs

12,364  
Virtual



527,898  
In-Person

## 540,262

Program Attendance

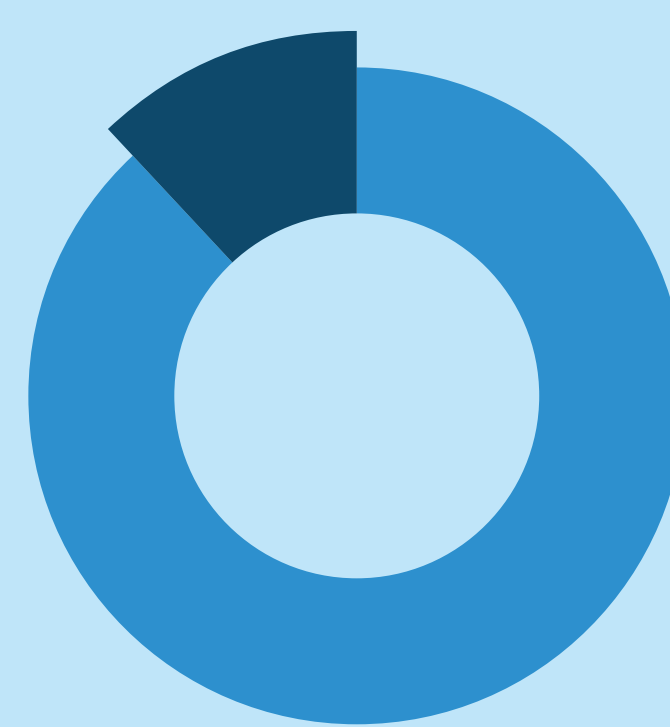
### Job Help



## 2,342

Programs

807  
Virtual

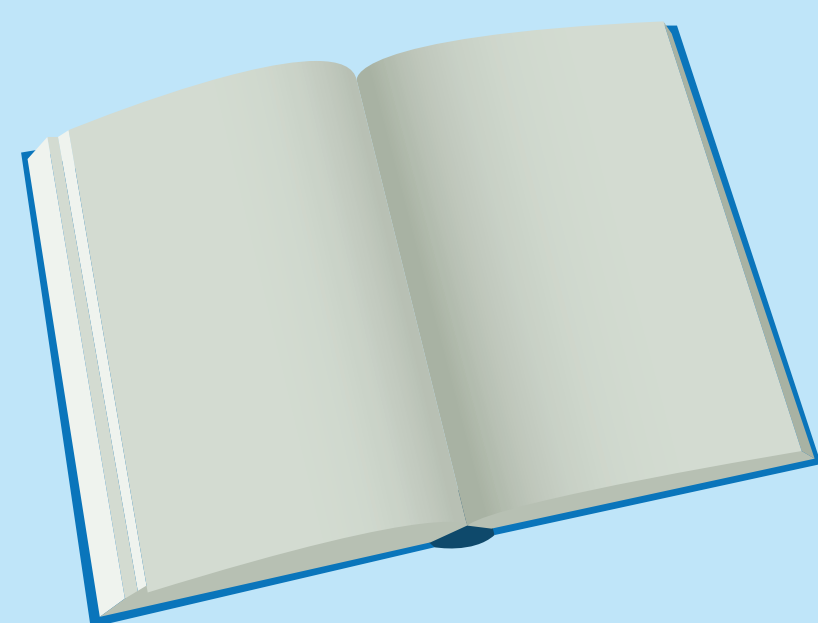


5,889  
In-Person

## 6,696

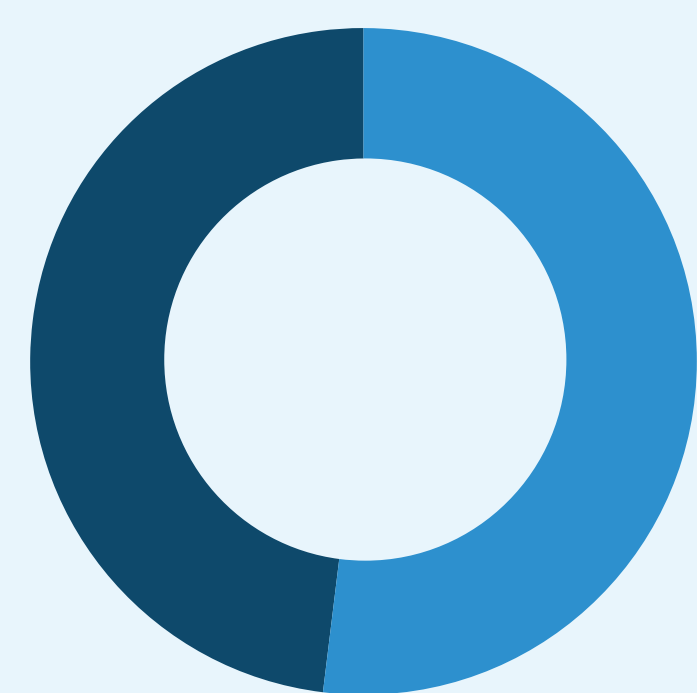
Program Attendance

### Materials Borrowed



## 4,898,734

Digital Circulation



## 9,421,237

Total Circulation

## 23.4%

Growth in  
Digital Circulation\*



## 8.6%

Growth in Circulation\*



### MoLi and MiLa



## 22,278

MoLi Circulation

## 398

MoLi Programs  
Delivered

## 4,720

Moli Program  
Attendance

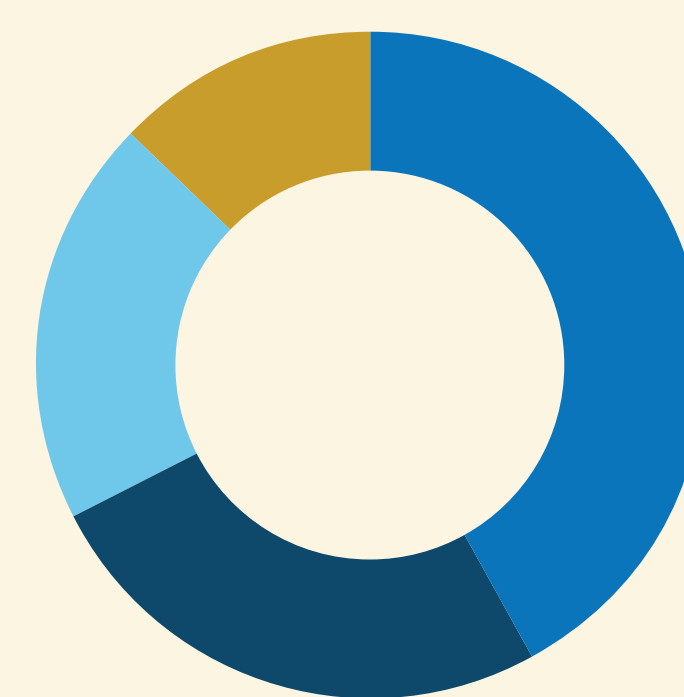
## 249

MiLa\*\* Customers

## 7

MiLa\*\* Visits  
from May to June

### Social Media



## 22,788

Facebook

## 13,854

Instagram

## 6,876

LinkedIn

## 10,695

X

### Pre-Third Grade Literary Impact

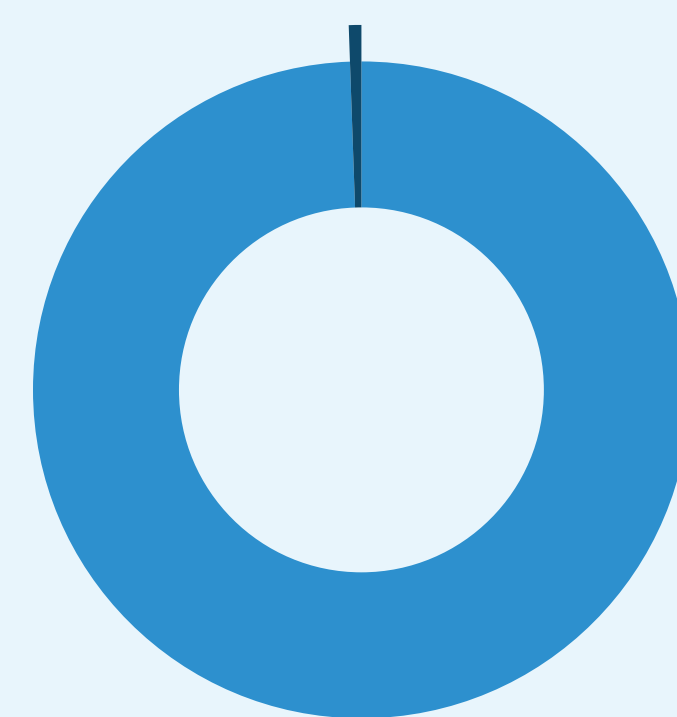


## 407,079

Program Attendance

## 3,268

Virtual



## 403,811

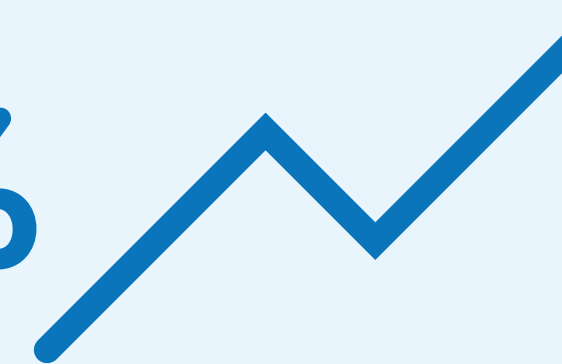
In-Person

## 14,564

Programs

## 38.69%

Growth in  
Literacy Programming\*



### Library Cardholders



## 346,661

Active Cardholders

## 4.5%

Growth in  
Active Cardholders\*



## SUMMER READING

## 325,191

Days Logged

## 8,026

Active Readers

## 1,786

Challenge Completions

## 11,301

Accounts Registered

## 27,482

Badges Earned

## one access

## 52.4%

ONE Access\*\*\* Students  
who used their account during  
the 24-25 school year

\*\*\* ONE Access, or "One Number Equals Access," allows students in local colleges, charter and private schools, home schools, and Charlotte Mecklenburg Schools to have access to Library resources with their school identification numbers instead of separate Library cards.

\*\* MiLa is a state-of-the-art mobile internet lab that brings the power of technology and learning directly to the community. It serves as a mobile computer lab, classroom, and Wi-Fi hotspot, offering access to digital resources outside Library walls. With the development of new community partnerships, it began site visits in May 2025.

\* Growth is recorded  
from FY 2024 to  
FY 2025



CHARLOTTE MECKLENBURG

# LIBRARY